



CONSTRUCTION

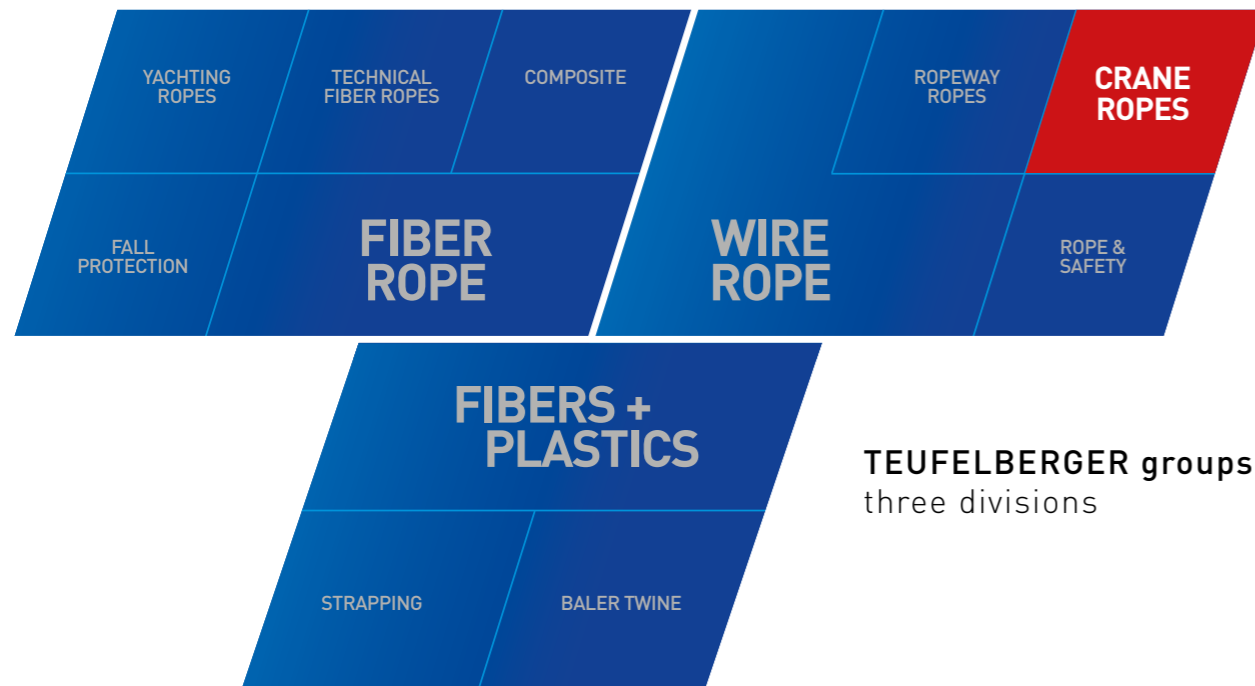
# SPECIAL STEEL WIRE ROPES



TOGETHER IN MOTION

TEUFELBERGER SEIL GES.M.B.H.

# 220 YEARS OF SUCCESS



1790	1901	1931	1961	1965	1986	1998	2001	2007	2012
Establishment of a ropery in Wimsbach	Martin Teufelberger relocates his hemp ropery to Wels, Vogelweidstrasse	Production of the first steel rope	Shift from the use of natural to synthetic fibers	Production of the first plastic strapping	A second site in Wels, Boehmerwaldstrasse, goes on line	Opening of the rope factory in Veseli, Czech Republic. Sewing up of ropes and harnesses	Acquisition of the St. Aegydy factory. Production of ropeway ropes of steel for the whole world	Acquisition of New England Ropes in Fall River, USA. Production of fiber ropes	Start of the Composite Technology Center

## 5 LOCATIONS



**TEUFELBERGER Ges.m.b.H.**  
Wels headquarters, Austria  
strapping, baler twines, fiber ropes

**TEUFELBERGER Seil Ges.m.b.H.**  
Wels Wire Rope, Austria  
wire ropes

**TEUFELBERGER Seil Ges.m.b.H.**  
St. Aegydy Wire Rope, Austria  
wire ropes

**JIHOTEX spol s.r.o.**  
Veseli, Czech Republic  
fiber ropes

**New England Ropes Corp.**  
Fall River, USA  
fiber ropes

# CONTENTS

<b>About TEUFELBERGER</b>	4
<b>High-Performance steel wire ropes</b>	6
Applications:	
▪ Ropes for Tower Cranes	6
▪ Ropes for All Terrain and Crawler Cranes	7
▪ Ropes for Civil Engineering	8
▪ Ropes for Scraper Installations and Pontoon Cranes	10
<b>Rotation resistant ropes</b>	12
<b>EVOLUTION</b> EVOLUTION TK16	12
<b>EVOLUTION</b> EVOLUTION TK16plus	13
<b>EVOLUTION</b> EVOLUTION TK18	14
<b>EVOLUTION</b> EVOLUTION TK17	15
<b>EVOLUTION</b> EVOLUTION TK17plus	15
<b>PERFECTION</b> PERFECTION TK15	16
<b>Non-rotation-resistant ropes</b>	18
<b>EVOLUTION</b> QS 816 V(G)	18
<b>EVOLUTION</b> EVOLUTION Q8	19
<b>EXECUTION</b> PS 610 F	20
<b>EXECUTION</b> EXECUTION K3	21
	114S
<b>Information</b>	22
Wire rope end connections	22
Discard criteria	23

## ⚠ WARNING

Using these products may prove hazardous. Therefore, never use our products for purposes other than those they were designed for. Customers must ensure that all persons using these products are familiar with their correct use and the related necessary safety precautions. Please bear in mind that any of these products may inflict harm when used incorrectly or subjected to excessive loads.

TEUFELBERGER®, PLASTIFILL™ and SUPERFILL® are registered trademarks of TEUFELBERGER Ges.m.b.H.  
Subject to technical modifications, typesetting and printing errors.

TEUFELBERGER SEIL GES.M.B.H.

# WE OFFER MORE ...

In manufacturing, research & development, and marketing & sales, we at TEUFELBERGER Seil Ges.m.b.H. focus exclusively on high quality special purpose steel wire ropes. Breakthrough technologies and top quality products are the basis of our success.

## TEUFELBERGER SERVICE

### Expert advice

TEUFELBERGER's network of experts provides competent support close to you. This allows us to find the best possible solution for your needs.

24-hour hotline: +43 (0) 7242-615-388

### Customized solutions and products

Joint development efforts with crane and equipment manufacturers and close co-operation with our suppliers ensure that our products satisfy all your requirements. Working together with you, the team from TEUFELBERGER will elaborate the best solution.

## QUALITY & EXPERTISE

### Top quality

TEUFELBERGER processes only high quality raw materials in its cutting-edge manufacturing facilities. The comprehensive quality testing of primary materials and final products as well as the certification to ISO 9001 guarantee the constant high quality of our steel wire ropes.

### Competence

Our special ropes are designed for fulfilling the requirements of your application. Worldwide reference projects are testimony to the high quality of our work. We provide test certificates to ABS, DNV, BV, RINA, GL, LR, RS, NKK, CCS – depending on your needs.



## RESEARCH & DEVELOPMENT

### Innovative products

As customer requirements increase, our products must satisfy new, higher demands. Our R & D department provides innovation and permanent product improvement in terms of safety, reliability, and durability.

### Successful partnerships

Intensive partnerships with a sizable number of key users in the retrofit market are a clear proof of our focus on our customers' needs. Also, the long-standing cooperation with universities and research institutes ensures the lively exchange of ideas toward the development of new and existing products.

## PLASTIFILL™ INSERT

The lubricated steel core is covered in a tight synthetic coat. This provides the following advantages:

- Long service life due to the permanent lubrication and the reduction of friction between the rope's core and its outer strands
- Resistance against pressing and lateral pressures as well as to environmental influences and the ingress of dirt
- Higher breaking forces due to reduced surface pressures in the rope
- Reduced internal abrasion by exact strand position with consistent interstices

## SUPERFILL® COMPACTION TECHNOLOGY

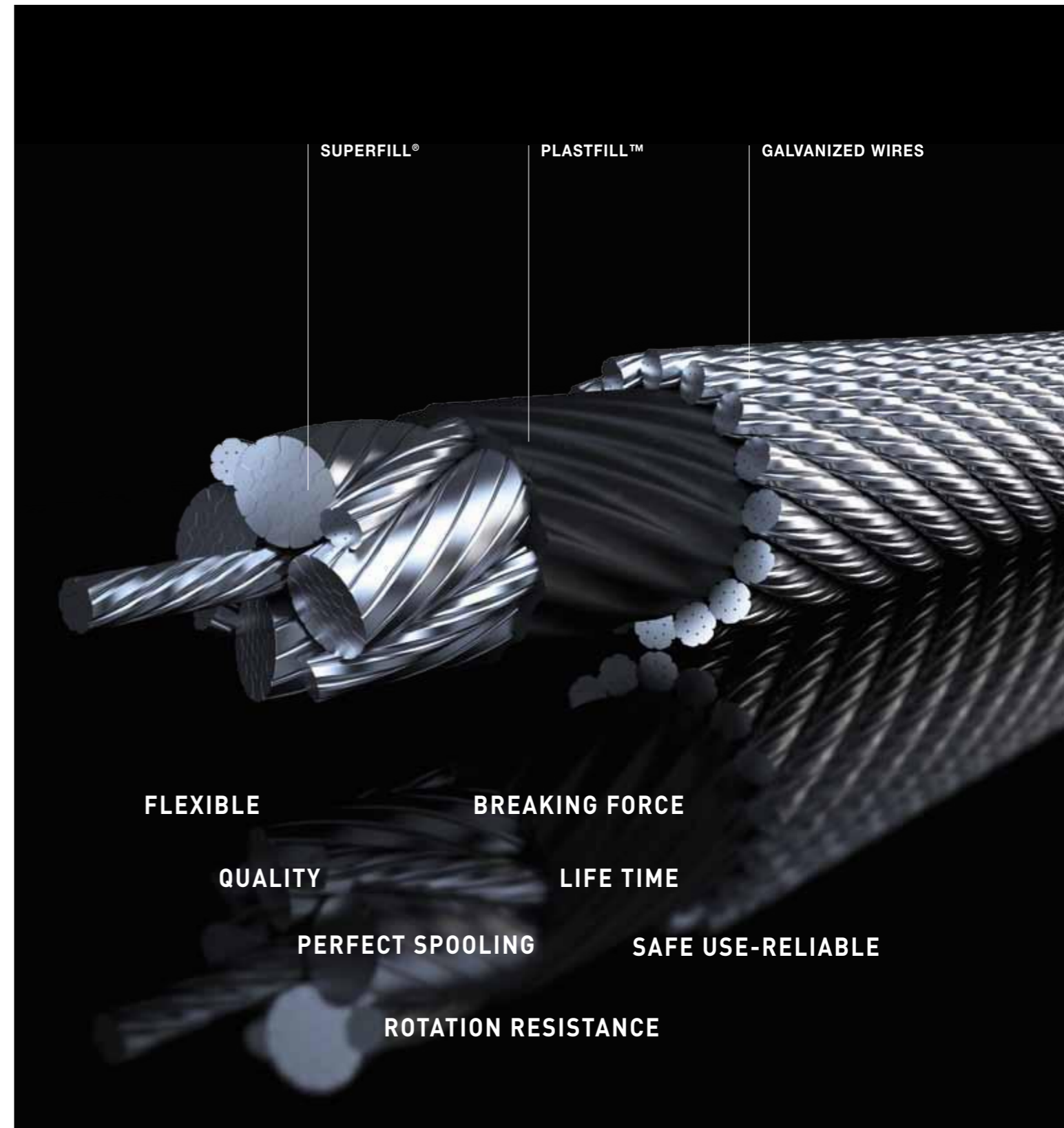
Each rope strand is compacted in a special process in order to significantly improve the rope's properties:

- Up to 30% greater breaking forces than in non-compacted ropes
- Prolonged service life due to lower specific loading
- Less abrasion on the rope and on reels and drums due to the rope's smooth surface
- Resistance against crushing in multilayer operations

## GALVANIZED WIRES

Our steel wires are galvanized before they are drawn in order to achieve high wire precision. This ensures optimal stability and service life. In combination with the PLASTIFILL™ technology, this galvanization ensures exceptional corrosion resistance.

# OUR TECHNOLOGIES, YOUR BENEFIT



# ROPES FOR TOWER CRANES

**Operational safety and reliability** are crucial for ropes employed in the building construction sector. The trend toward operating machinery at maximum capacity also entails unscheduled and very costly downtimes caused by underperforming ropes. Ropes made by TEUFELBERGER, however, have proven their worth on tower cranes from leading manufacturers around the globe: 24 hours a day, 365 days a year.

## ROPES

### ■ EVOLUTION TK17

Rotation resistant lang's lay rope featuring SUPERFILL® compaction technology and suitable for hoisting to extreme heights and high loads.

- High resistance to external torsion, even in the case of large lifting heights
- Very high flexibility resulting in excellent winding behavior, great ease of installation and reeving of the rope
- Excellent service life due to high wear resistance in multilayer spooling applications

### ■ PERFECTION TK15

Rotation resistant lang's lay or ordinary lay rope, with inner rope in SUPERFILL® compaction technology.

- Great value for money due to its cost-optimized rope structure
- Best torsion behavior and optimum performance

### ■ QS 816 V

Extremely resistant 8-strand ordinary lay rope suited for use as a guy rope, pendant rope, and as mounting rope.

- Operational reliability and safety due to its extremely high breaking forces and low elongation
- Extremely robust and resistant due to the SUPERFILL® technology
- Outstanding durability due to PLASTFILL™ insert

### ■ EVOLUTION Q8

Extremely flexible 8-strand ordinary lay rope, suited for use as a trolley rope.

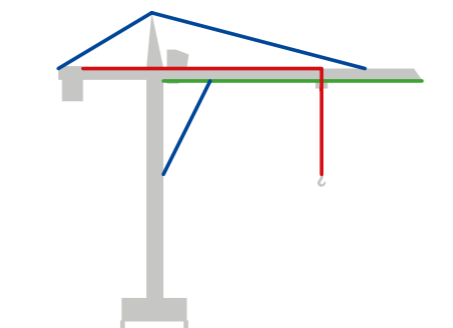
- Long service life due to excellent flexural fatigue properties
- Extremely easy to handle due to the exceptionally high flexibility of the rope

### ■ 114 S

6-strand ordinary lay rope, suited for use as a trolley or mounting rope.

## APPLICATIONS

The colored squares preceding the rope's designation refer to the illustration.



Tower Crane



# ROPES FOR ALL TERRAIN AND CRAWLER CRANES

The performance of mobile cranes (truck mounted cranes, crawler cranes) continues to be enhanced. In this context, great flexibility, the ability to handle heavy loads, and increased performance in general constitute the main objectives. TEUFELBERGER offers high performance hoisting ropes specifically designed for truck mounted cranes and combining superior breaking forces and multilayer spooling capability.

## ROPES

### ■ EVOLUTION TK17

Rotation resistant lang's lay rope featuring SUPERFILL® compaction technology for multilayer spooling, particularly large lifting heights, and high loads.

- Its extremely high flexibility makes this rope easy to install and to reeve
- Its exceptional breaking forces opens up new opportunities in crane design
- Particularly well suited for multilayer spooling due its high dimensional stability under lateral pressures and its minimal diameter tolerances
- The extremely low torsion in combination with a high resistance to rotation ensure the safe and troublefree transport of loads

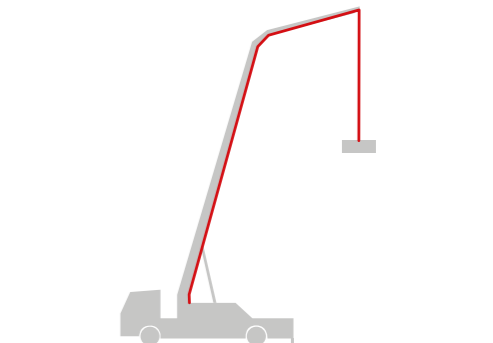
### ■ PERFECTION TK15

Rotation resistant lang's lay or ordinary lay rope, with inner rope in SUPERFILL® compaction technology.

- Great value for money thanks to its innovative structure
- Best torsional behavior and optimum performance, even for large lifting heights

## APPLICATIONS

The colored squares preceding the rope's designation refer to the illustration.



All Terrain and Crawler Cranes



# ROPES FOR CIVIL ENGINEERING

In order to achieve optimum performance, various different applications involved in civil engineering such as drilling, trench cutting, grabbing, or pile driving require rope types attuned to the respective individual purpose. By collaborating with leading equipment manufacturers and well-known end customers, TEUFELBERGER has been able to accumulate extensive experience, particularly in the specialized civil engineering segment.

## ROPES

### ■ EVOLUTION TK16 & EVOLUTION TK18

Rotation resistant ordinary lay or lang's lay rope. Featuring a revolutionary design, extremely high breaking force and high flexibility, perfect suited as a hoisting rope.

- Extremely resistant to external environmental influences and the ingress of dirt, due to its PLASTFILL™ insert
- Excellent winding characteristics due to its excellent dimensional stability under lateral pressures, even in multilayer spooling use
- Extremely high operational safety due to the rope's high breaking forces and its high resistance to torsion
- Resistant to shock loads, due to its 4-strand core

### ■ PERFECTION TK15

Rotation resistant ordinary lay or lang's lay rope, particularly well suited for use as hoisting and auxiliary hoisting rope.

- Great value for money due to its innovative structure
- Best torsion behavior and optimum performance

### ■ QS 816 V(G)

Extremely resistant 8-strand ordinary lay or lang's lay rope with PLASTFILL™ insert, suited as a luffing rope, as well as a hoisting rope and a hoisting/closing rope for diaphragm wall grabs.

### ■ QS 816 V

This ordinary lay rope is particularly suited for use as a pendant rope, as a hoisting rope and dragline for cable dredger used as scrapers, and as a crowd rope for rotary drilling rigs.

- Reliability and safety in operation as a result of its extremely high breaking forces
- Extremely robust and resistant due to the PLASTFILL™ insert
- Very high dimensional stability under lateral pressures ensures excellent winding behavior, even in multilayer spooling use

### ■ EVOLUTION Q8

Extremely flexible 8-strand ordinary lay rope, suited as a crowd rope for rotary drilling rigs

- Very long service life thanks to excellent flexural fatigue properties
- Highly flexible rope which also provides for a small d/D ratio

### ■ EXECUTION K3

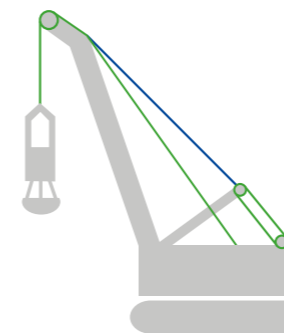
6-strand ordinary lay rope, suited as a crowd rope for rotary drilling rigs

- Cost-effective 6-strand rope that serves as an alternative to the 8-strand ropes
- Resistant to shock loads

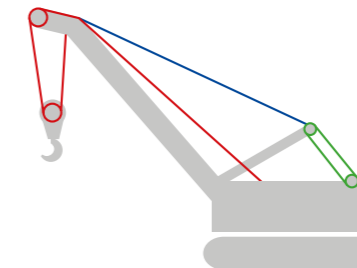


## APPLICATIONS

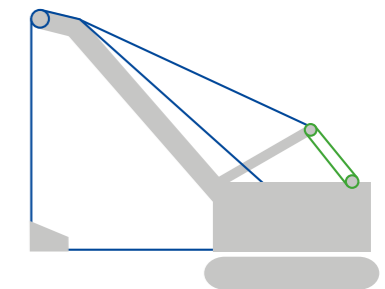
The colored squares preceding the rope's designation refer to the illustration.



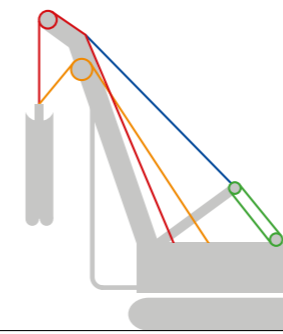
Diaphragm Wall Grab



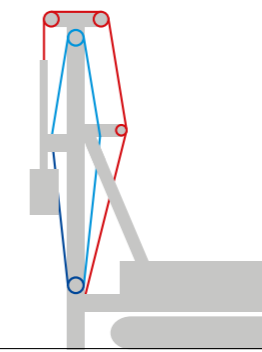
Cable Dredger



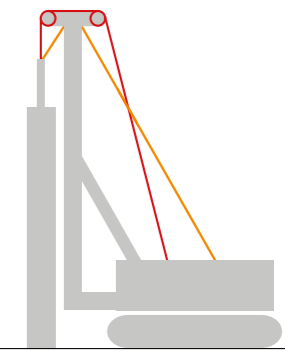
Cable Dredger



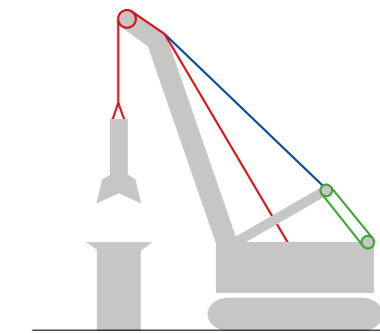
Slurry Trench Cutter



Rotary Drilling Rig



Pile Driver



Bored Pile Grab

# ROPES FOR SCRAPER INSTALLATIONS AND PONTOON CRANES

The rough operating conditions of rope excavators in gravel mining pose particular challenges for the ropes, especially in terms of their flexibility and resistance to shock-type loads.

## ROPES

### ■ QS 816 V

Extremely resistant 8-strand ordinary lay rope incorporating SUPERFILL® compaction technology and a PLASTIFILL™ insert. It is suited for use as a dragline in gravel mining and scraper installations

- Reliability and safety in operation as a result of its extremely high breaking forces
- Extremely robust and resistant due to its PLASTIFILL™ insert
- Its high dimensional stability under lateral pressures provides for excellent winding characteristics, even in multilayer spooling use

### ■ PS 610 F

6-strand round strand rope featuring a fiber core with SUPERFILL® compaction technology and a PLASTIFILL™ insert. It is suited for use as a dragline in gravel mining and scraper installations.

- Extreme wear and shock resistance thanks to the rope's special structure including a flexible fiber core, thick outer wires, and a high degree of compaction
- Particularly high dimensional stability under lateral pressures due to the plastic-infused fiber core.

## APPLICATIONS

The colored squares preceding the rope's designation refer to the illustration.

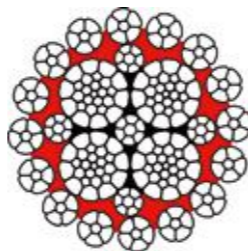


Scraper Installation



# EVOLUTION TK16

Revolutionary design, high quality materials, and perfectly harmonized production processes – EVOLUTION TK16 combines all the characteristics needed for your application: Extremely resistant and best flexibility!



## SPECIFICATIONS

- Ordinary lay or lang's lay, right or left lay
- 8 – 30mm: 16 x K6-EPIWRC (K), RCN 23-1
- 32 – 42mm: 16 x K7-EPIWRC (K), RCN 23-2

- ✓ MULTILAYER SPOOLING
- ✓ SUPERFILL®
- ✓ PLASTIFILL™



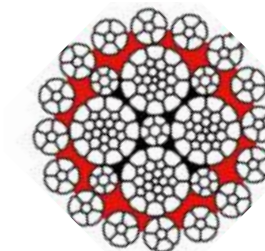
## TECHNICAL DATA

Nominal Ø		Weight [kg/m]	Minimum breaking force [kN]			Nominal Ø		Weight [kg/m]	Minimum breaking force [kN]		
[mm]	[inch]		1770 N/mm <sup>2</sup>	1960 N/mm <sup>2</sup>	2160 N/mm <sup>2</sup>	[mm]	[inch]		1770 N/mm <sup>2</sup>	1960 N/mm <sup>2</sup>	2160 N/mm <sup>2</sup>
8	5/16	0,34	54	59	64	24		2,94	483	535	580
9		0,41	67	74	78	25	1	3,15	537	595	639
10		0,50	82	91	98	26		3,49	567	627	675
11	7/16	0,61	100	111	118	27		3,74	609	674	725
12		0,74	120	133	144	28		4,05	655	725	780
13		0,86	141	156	170	28,57	1 1/8	4,14	668	744	814
14	9/16	1,01	163	181	197	29		4,27	701	777	835
15		1,16	194	215	231	30		4,62	749	830	893
16	5/8	1,32	221	244	263	32	1 1/4	5,24	853	944	1.016
17		1,50	241	267	290	34		5,90	958	1.061	1.141
18		1,64	279	309	333	36		6,65	1.072	1.187	1.277
19	3/4	1,85	312	345	371	38	1 1/2	7,35	1.237	1.369	1.472
20		2,08	338	374	401	40		8,13	1.317	1.458	1.568
21		2,26	373	413	444	42		8,97	1.452	1.608	1.729
22	7/8	2,51	408	452	487						

Other rope diameters are available on request.

# EVOLUTION TK16<sup>plus</sup>

Higher breaking forces for special customer needs. The consistent and systematic further development and improvement of the production processes involved facilitates particularly narrow manufacturing tolerances.



## SPECIFICATIONS

- Ordinary lay or lang's lay, right or left lay
- 8 – 30mm: 16 x K6-EPIWRC (K), RCN 23-1
- 32 – 42mm: 16 x K7-EPIWRC (K), RCN 23-2

- ✓ MULTILAYER SPOOLING
- ✓ SUPERFILL®
- ✓ PLASTIFILL™



## TECHNICAL DATA

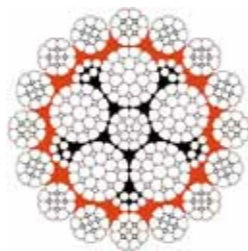
Nominal Ø		Weight [kg/m]	Minimum breaking force [kN]		Nominal Ø		Weight [kg/m]	Minimum breaking force [kN]	
[mm]	[inch]		1960 N/mm <sup>2</sup>		[mm]	[inch]		1960 N/mm <sup>2</sup>	
8	5/16	0,34	62		24		2,94	559	
9		0,41	79		25	1	3,15	606	
10		0,50	97		26		3,49	656	
11	7/16	0,61	117		27		3,74	707	
12		0,74	140		28		4,05	760	
13		0,86	164		28,57	1 1/8	4,14	792	
14	9/16	1,01	190		29		4,27	816	
15		1,16	218		30		4,62	873	
16	5/8	1,32	248		32	1 1/4	5,24	993	
17		1,50	280		34		5,90	1.121	
18		1,64	314		36		6,65	1.257	
19	3/4	1,85	350		38	1 1/2	7,35	1.369	
20		2,08	388		40		8,13	1.517	
21		2,26	428		42		8,97	1.672	
22	7/8	2,51	469						

Other rope diameters are available on request. Minimum quantity on request.

# EVOLUTION TK18



The **EVOLUTION TK18** is our high-performance rope for large cranes. EVOLUTION TK18 has been developed for cranes which operate under hardest conditions. This rope offers best in class breaking forces, a high flexibility and is the first choice for larger diameters between 44 and 80 mm.



## SPECIFICATIONS

- Ordinary lay or lang's lay, right or left lay
- 16 x K17F - EPIWRC (K), RCN 27

- SUPERFILL®
- PLASTIFILL™
- MULTILAYER SPOOLING



## TECHNICAL DATA

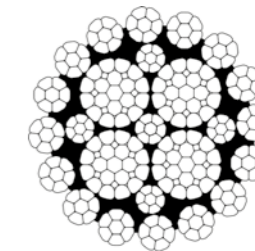
Nominal Ø		Weight [kg/m]	Minimum breaking force [kN]	
[mm]	[inch]		1770 N/mm <sup>2</sup>	1960 N/mm <sup>2</sup>
44,45	1 3/4	9,48	1.641	1.817
46		10,24	1.758	1.960
48		11,12	1.914	2.119
50		12,40	2.076	2.299
50,8	2	12,98	2.143	2.374
52		13,61	2.246	2.487
54		14,48	2.422	2.682
56		15,28	2.605	2.884
58		16,80	2.794	3.094
60		17,92	2.990	3.311
62		18,90	3193	3536
64		20,43	3.402	3.767
66		21,14	3.618	4.006
68		22,44	3.841	4.253
70		23,91	4.070	4.507
72		25,40	4.306	4.768
74		26,90	4.548	5.037
76		28,07	4.798	5.313
78		29,80	5.053	5.596
80		31,40	5.316	5.887

Other rope diameters are available on request.

# EVOLUTION TK17



**EVOLUTION TK17** features - due to its structure - optimum all-round characteristics combined with extremely high breaking forces. EVOLUTION TK17 was designed specifically for use in challenging multilayer spooling conditions, especially also for small drum diameters.



## SPECIFICATIONS

- Lang's lay (also available as ordinary lay rope), right or left lay
- 16 x K7-PIWRC (K), RCN 23-2

- MULTILAYER SPOOLING
- SUPERFILL®
- PLASTIFILL™



## TECHNICAL DATA

Nominal Ø		Weight [kg/m]	Minimum breaking force [kN]		
[mm]	[inch]		1770 N/mm <sup>2</sup>	1960 N/mm <sup>2</sup>	2160 N/mm <sup>2</sup>
10		0,48	82	91	98
11		0,61	100	111	118
12		0,72	120	133	144
13		0,86	141	156	170
14	9/16	0,97	163	181	197
15		1,11	188	208	226
16	5/8	1,26	214	236	257
17		1,42	241	267	286
18		1,61	271	300	325
19	3/4	1,78	302	334	362
20		2,02	338	374	401
21		2,23	373	413	444
22	7/8	2,44	408	452	487
23		2,62	445	493	533
24		2,83	483	535	580
25	1	3,11	524	580	624
26		3,34	567	614	677
27		3,58	609	674	725
28		3,89	655	725	780

Other rope diameters are available on request.

# EVOLUTION TK17<sup>plus</sup>

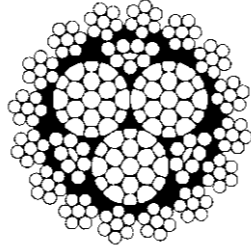
Nominal Ø		Weight [kg/m]	Minimum breaking force [kN] 2160 N/mm <sup>2</sup>
[mm]	[inch]		
23		2,62	550
26		3,34	682
28		3,89	811
32	1 1/4	4,98	1.035



# PERFECTION TK15



Rotation is a thing of the past, the future is PERFECTION TK15. Check out this ideal combination of exceptional torsional stability and high breaking forces, long service life and optimum winding behavior.  
**Rotation resistant. Cost-effective. Safe.**



## SPECIFICATIONS

- Ordinary lay or lang's lay, right or left lay
- 16 x 7-IWRC (K), RCN 23-2

- MULTILAYER SPOOLING
- SUPERFILL®
- PLASTIFILL™



## TECHNICAL DATA

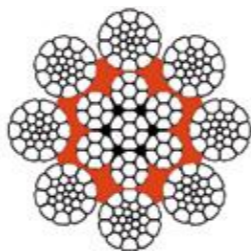
Nominal Ø [mm]	[inch]	Weight [kg/m]	Minimum breaking force [kN]		
			1770 N/mm <sup>2</sup>	1960 N/mm <sup>2</sup>	2160 N/mm <sup>2</sup>
7		0,23	36	40	43
8	5/16	0,30	49	53	56
9		0,38	60	67	71
9,2		0,39	63	70	77
10		0,48	74	82	87
11	7/16	0,56	90	100	106
12		0,67	108	118	126
13		0,78	126	140	148
14	9/16	0,89	146	162	172
15		1,04	168	186	197
16	5/8	1,16	191	211	224
17		1,32	215	239	253
18		1,49	241	267	284
19	3/4	1,64	269	298	316
20		1,82	298	330	350
21		2,01	328	364	386
22	7/8	2,20	360	399	423
23		2,40	394	436	463
24		2,61	429	475	504

Other rope diameters are available on request.



# QS 816 V(G)

**Extreme resistance** to negative external influences distinguish this rope from others. SUPERFILL® compaction technology developed by TEUFELBERGER provides high breaking forces and highest safety in use. Compaction in the core and a PLASTIFILL™ insert result into stability against lateral pressures.



## SPECIFICATIONS

- QS 816 V in ordinary lay configuration, QS 816VG in lang's lay configuration, right or left lay
- 10 – 42mm: 8 x K26WS - EPIWRC (K), RCN 09
- 44 – 50mm: 8 x K31WS - EPIWRC (K), RCN 11
- 52 – 70mm: 8 x K42WS - EPIWRC (K), RCN >13

- MULTILAYER SPOOLING
- SUPERFILL®
- PLASTIFILL™

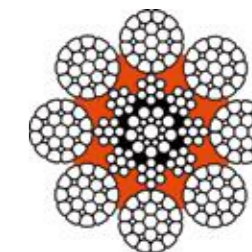
## TECHNICAL DATA

Nominal Ø		Weight [kg/m]	Minimum breaking force [kN]			Nominal Ø		Weight [kg/m]	Minimum breaking force [kN]		
[mm]	[inch]		1770 N/mm²	1960 N/mm²	2160 N/mm²	[mm]	[inch]		1770 N/mm²	1960 N/mm²	2160 N/mm²
10		0,46	81	89	98	30		4,37	764	846	897
11	7/16	0,55	97	107	118	32	1 1/4	4,90	864	957	1.072
12		0,69	117	129	143	34		5,59	945	1.046	1.153
13		0,81	141	156	172	36		6,36	1.071	1.186	1.284
14	9/16	0,93	162	179	198	38	1 1/2	7,03	1.222	1.354	1.431
15		1,06	185	205	226	40		7,81	1.342	1.486	1.545
16	5/8	1,20	210	232	256	42		8,60	1.482	1.641	1.736
17		1,35	235	261	287	44		9,27	1.596	1.768	on request
18		1,55	263	291	321	46		10,30	1.760	1.949	on request
19	3/4	1,71	302	335	369	48		10,78	1.848	2.050	on request
20		1,89	330	365	402	50		11,60	2.016	2.232	on request
21		2,15	374	414	457	52		12,50	2.180	2.414	on request
22	7/8	2,34	408	451	497	54		13,91	2.287	2.532	on request
23		2,54	445	492	543	56		14,50	2.529	2.850	on request
24		2,75	467	517	570	58		15,60	2.712	3.004	on request
25	1	2,97	518	574	633	60		16,70	2.903	3.214	on request
26		3,19	555	615	678	62		17,80	3.099	3.432	on request
27		3,51	595	659	727	64		19,74	3.303	3.657	on request
28		3,76	656	726	800	66		20,63	3.495	3.870	on request
28,57	1 1/8	4,04	672	745	820	68		21,40	3.728	4.128	on request
29		3,98	694	768	847	70		22,70	3.951	4.375	on request

Other rope diameters are available on request.

# EVOLUTION Q8

**Endurance is everything.** EVOLUTION Q8 – the high performance hoisting rope for industrial applications impresses with its extremely long service life and its high breaking forces. Due to its innovative outer compaction. EVOLUTION Q8. **Lasts significantly longer.**



## SPECIFICATIONS

- Ordinary lay, right or left lay
- 12 – 50mm: 8 x K25F - EPIWRC, RCN 06
- 52 – 54mm: 8 x K35F - EPIWRC, RCN 10

- MULTILAYER SPOOLING
- SUPERFILL®
- PLASTIFILL™

## TECHNICAL DATA

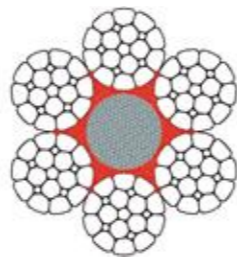
Nominal Ø		Weight [kg/m]	Minimum breaking force [kN]	
[mm]	[inch]		1770 N/mm²	1960 N/mm²
12		0,64	110	122
14	9/16	0,85	150	166
16	5/8	1,13	196	217
18		1,40	247	274
20		1,78	306	339
22	7/8	2,11	370	410
24		2,49	441	502
25	1	2,74	478	529
26		2,94	517	572
28		3,51	600	664
29		3,72	643	712
30		3,94	688	762
32	1 1/4	4,65	783	867
34		5,24	882	977
36		6,02	999	1.097
38	1 1/2	6,69	1.104	1.223
40		7,41	1.223	1.355
42		8,17	1.349	1.494
44		9,00	1.480	1.639
46		9,80	1.618	1.792
48		10,55	1.762	1.951
50		11,44	1.912	2.117
52		12,40	2.067	2.289
54		13,41	2.230	2.469

Other rope diameters are available on request.

# PS 610 F



PS 610 F stands for a 6-stand round strand rope in SUPERFILL® design featuring a PLASTFILL™ insert. Its extremely robust design including a plastic-infused fiber core makes this compacted steel wire rope ideal for use as a dragline in gravel mining, scraper installations, and on logging winches.



## SPECIFICATIONS

- Lang's lay, right or left lay
- 6 x K21F - SFC, RCN 03

- MULTILAYER SPOOLING
- SUPERFILL®
- PLASTFILL™

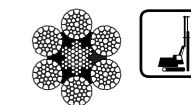


## TECHNICAL DATA

Nominal Ø [mm]	Weight [kg/m]	Minimum breaking force [kN]	
		1770 N/mm <sup>2</sup>	1960 N/mm <sup>2</sup>
22	2,1	375	
26	2,75	517	
29	3,7	643	
36	5,25	955	
40	6,47	1.232	

Other rope diameters are available on request.

# EXECUTION K3



## SPECIFICATIONS

- Ordinary lay, right or left lay
- 6 x K31WS - IWRC(K), RCN 08

- MULTILAYER SPOOLING
- SUPERFILL®
- PLASTFILL™

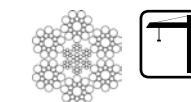


## TECHNICAL DATA

Nominal Ø [mm]	Weight [kg/m]	Minimum breaking force [kN]	
		1770 N/mm <sup>2</sup>	1960 N/mm <sup>2</sup>
20	1,8	315	349
22	2,2	381	422
24	2,7	453	502
26	3,0	532	589
28	3,5	617	683
30	4,0	708	784

Other rope diameters are available on request.

# 114 S



## SPECIFICATIONS

- Ordinary lay with steel core, right or left lay
- 6 x 19S - IWRC, RCN 02

- MULTILAYER SPOOLING
- SUPERFILL®
- PLASTFILL™



## TECHNICAL DATA

Nominal Ø [mm]	[inch]	Weight [kg/m]	Minimum breaking force [kN]
			1960 N/mm <sup>2</sup>
6,5		0,17	30
7		0,20	34
7,5		0,23	39
8	5/16	0,26	45
9		0,32	57
10		0,41	70
11	7/16	0,47	84
12		0,59	101

Other rope diameters are available on request.

## WIRE LOCK ACCORDING TO EN 13411



## MECHANICAL SPLICE ACCORDING TO EN 13411



## FURTHER END CONNECTIONS

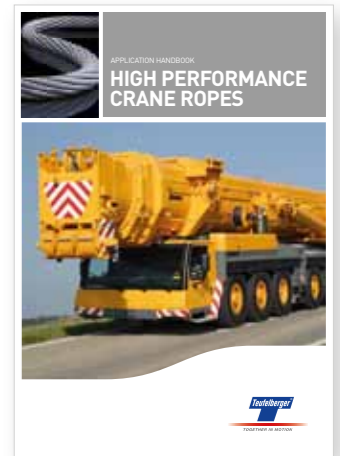
TEUFELBERGER  
Pull-Eye



Further connections available on request.

## DISCARD CRITERIA OF TEUFELBERGER SPECIAL STEEL WIRE ROPES

The discard criteria for TEUFELBERGER special steel wire ropes are defined according to ISO 4309. This includes reduction of the rope diameter, corrosion and wire breaks. For assessing the discard condition based on wire breaks, the rope category number (RCN) is used. For TEUFELBERGER special steel wire ropes, this number is listed in the following tables. For further details regarding the discard criteria for wire ropes to ISO 4309, see the „Application Handbook – High Performance Crane Ropes“ at [www.teufelberger.com](http://www.teufelberger.com)



### ROTATION RESISTANT ROPES

Type of design	Diameter range [mm]	RCN*	n**
<b>PERFECTION</b> PERFECTION TK15	7-24	23-2	112
<b>EVOLUTION</b> EVOLUTION TK16	9-30	23-1	96
	32-42	23-2	112
<b>EVOLUTION</b> EVOLUTION TK17	10-42	23-2	112
<b>EVOLUTION</b> EVOLUTION TK18	44-80	27	272

### NON-ROTATION-RESISTANT ROPES

Type of design	Diameter range [mm]	RCN*	n**
<b>EVOLUTION</b> QS 816 V(G)	10-42	9	208
	44-50	11	248
	52-70	>13	336
<b>EVOLUTION</b> EVOLUTION Q8	12-50	6	152
	52-54	10	224
<b>EXECUTION</b> PS 610 F	22-40	4	106
<b>EXECUTION</b> EXECUTION K3	20-30	8	186
<b>114S</b>	6-24	2	60

\* RCN = Rope Category Number

\*\*n = Number of outer strands and total number of load-bearing wires in the outer layer of strands in the rope



## YOUR BENEFIT WITH TEUFELBERGER:

### EXPERTISE

Our special steel wire ropes are designed for fulfilling the requirements of your application in an optimal way.

### HIGHEST QUALITY

Only high-strength material and state-of-the-art production processes are used for our products.

### SERVICE AROUND THE CLOCK

Our 24-hour hotline and top service team ensure that our experts are available within the shortest time possible wherever required.

### EXPERT CONSULTANCY

TEUFELBERGER's network of consultants ensures that expert support is close to you. Our staff is especially trained for your application which translates into cooperative development of the most useful answer to any problems which may occur.

### DELIVERY RELIABILITY

TEUFELBERGER's management of orders ensures optimal processing in production and logistics.

### RESEARCH AND DEVELOPMENT

Our R&D department provides permanent product improvement in terms of safety, reliability and service life.

**24-HOUR HOTLINE: +43 (0) 7242-615-388**

TEUFELBERGER Seil Ges.m.b.H.  
Böhmerwaldstraße 20  
4600 Wels, Austria  
T +43 7242 615-0  
F +43 7242 60501  
E wirerope@teufelberger.com

[www.teufelberger.com](http://www.teufelberger.com)



TOGETHER IN MOTION